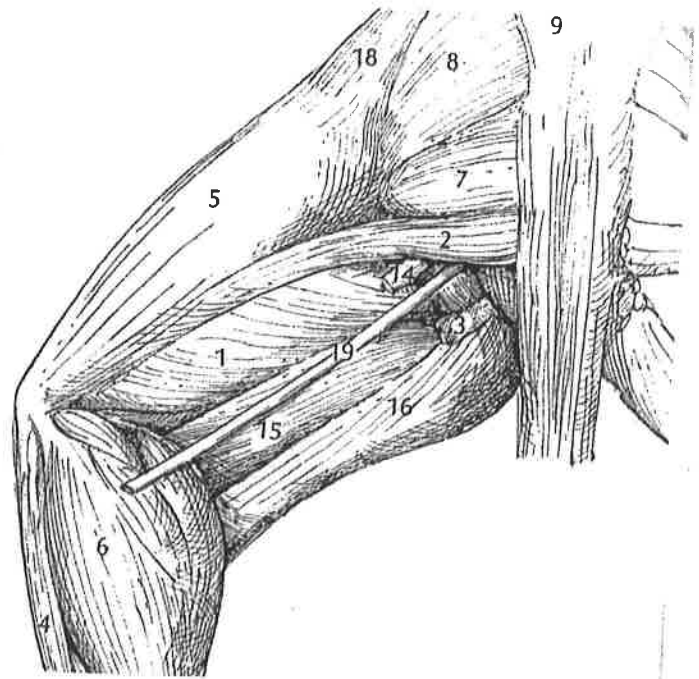
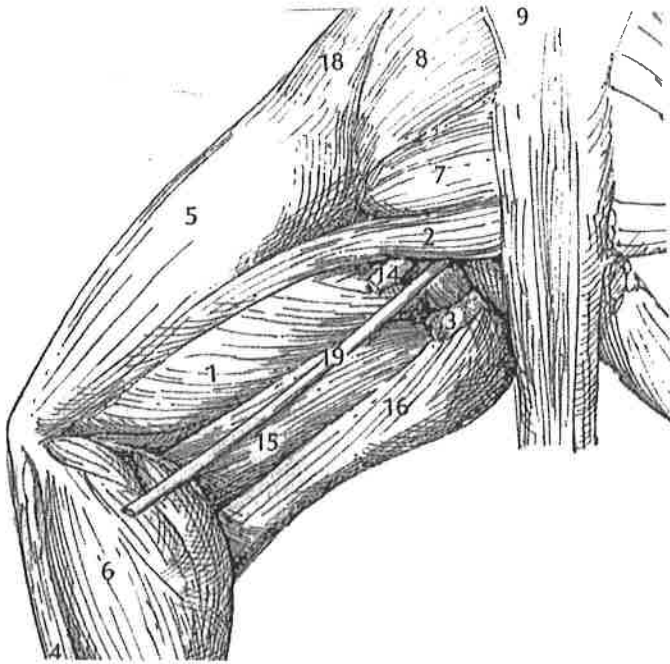
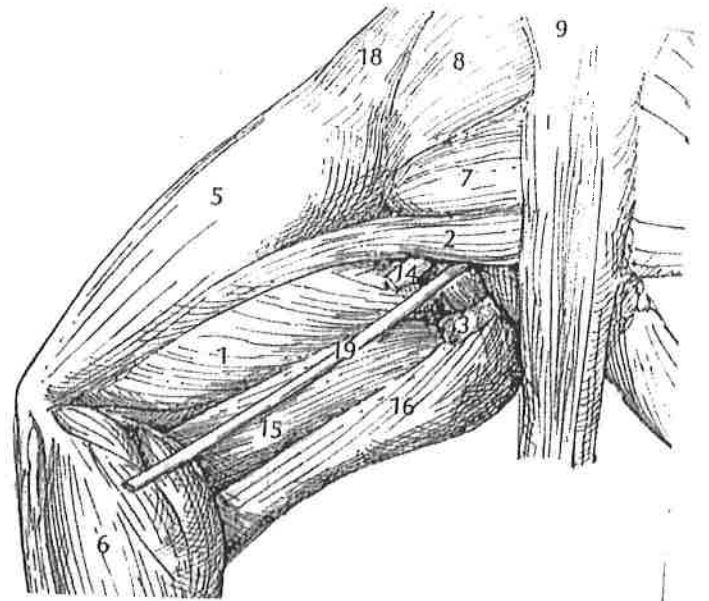
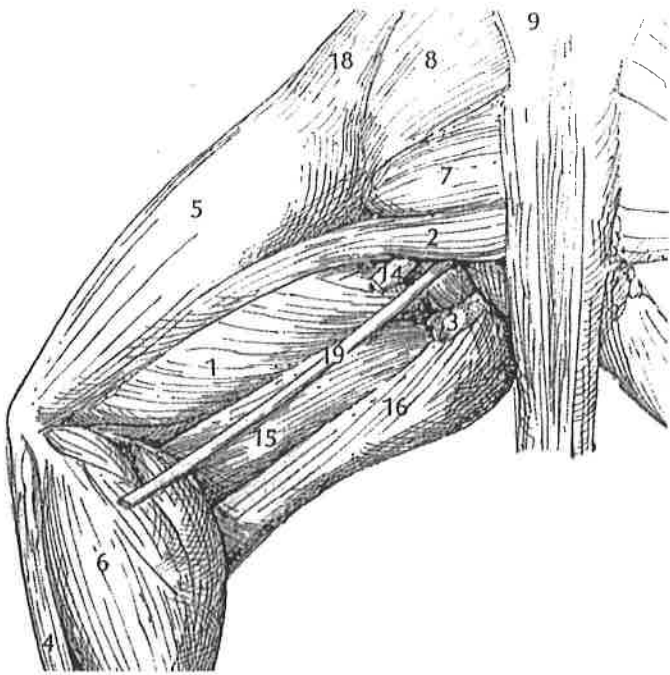


- Key: 1 adductor femoralis  
 2 adductor longus  
 13 semimembranosus  
 14 semitendinosus

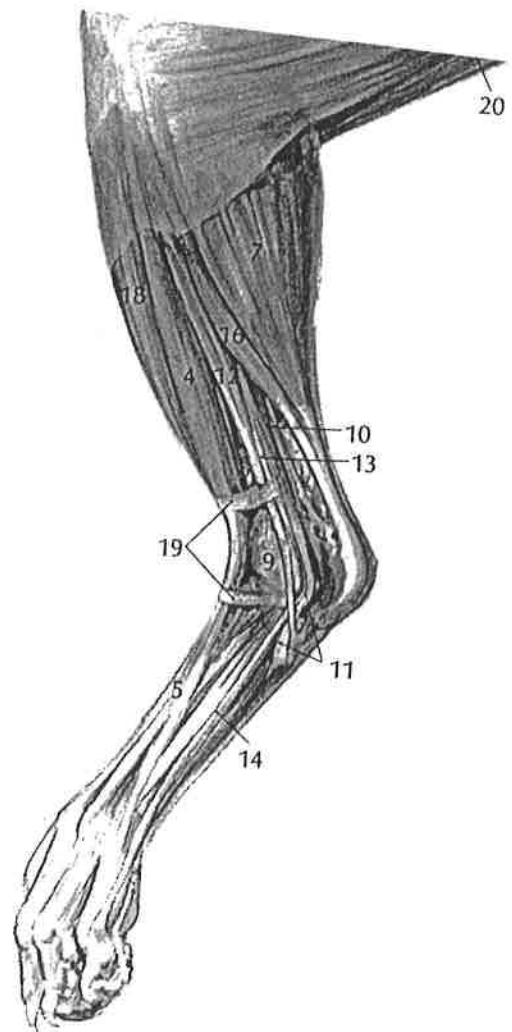
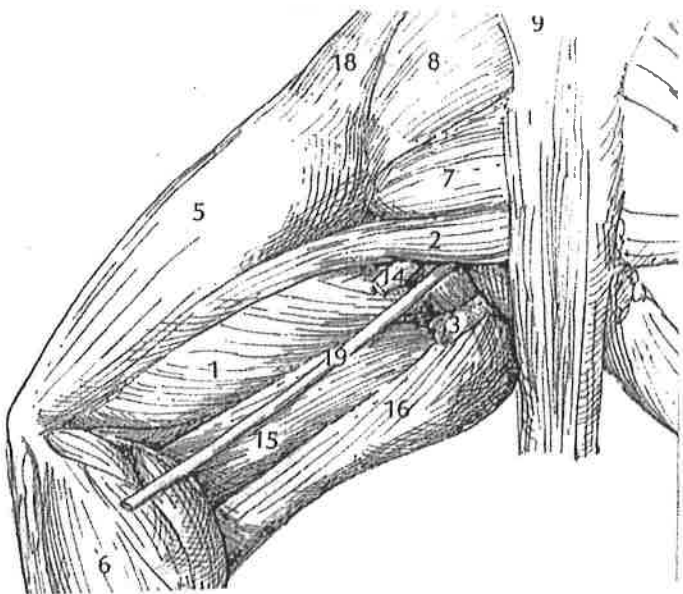
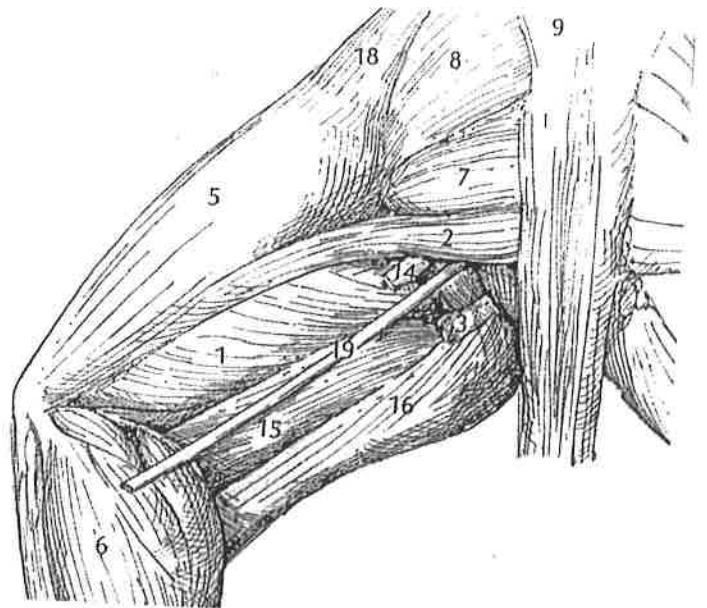
Directions: Cut out each image and glue to a separate note card or piece of card stock. Color one structure on each diagram and label it on the back of the card. Look up the origin, insertion, and principle action of the structure if it is a muscle and write it on the back of the card under the name. If the structure is a blood vessel or nerve, look up and write the function of that structure.





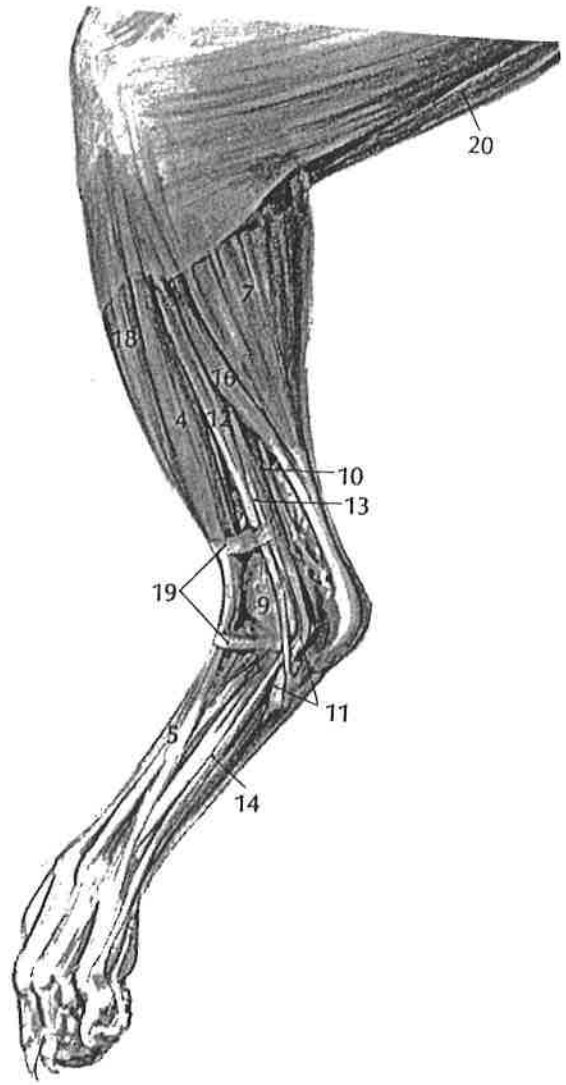
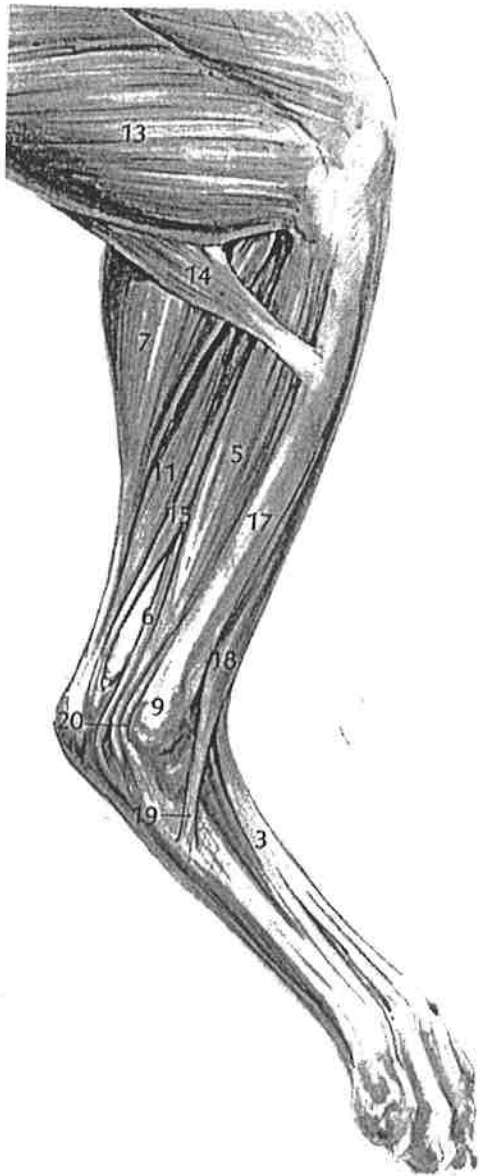
- Key: 7 gluteus maximus  
8 gluteus medius  
2 caudofemoralis  
15 semimembranosus





Key: 2 biceps femoris  
 16 semitendinosus  
 19 sciatic nerve  
 16 soleus





Key : 7 gastrocnemius

18 tibialis anterior

