

Name _____

Answer the following questions:

- 1) What are all of the functions of the skeletal system?

- 2) What are the two divisions of the skeletal system

- 3) Distinguish between the epiphysis and diaphysis.

- 4) How many bones are in the human body all together?

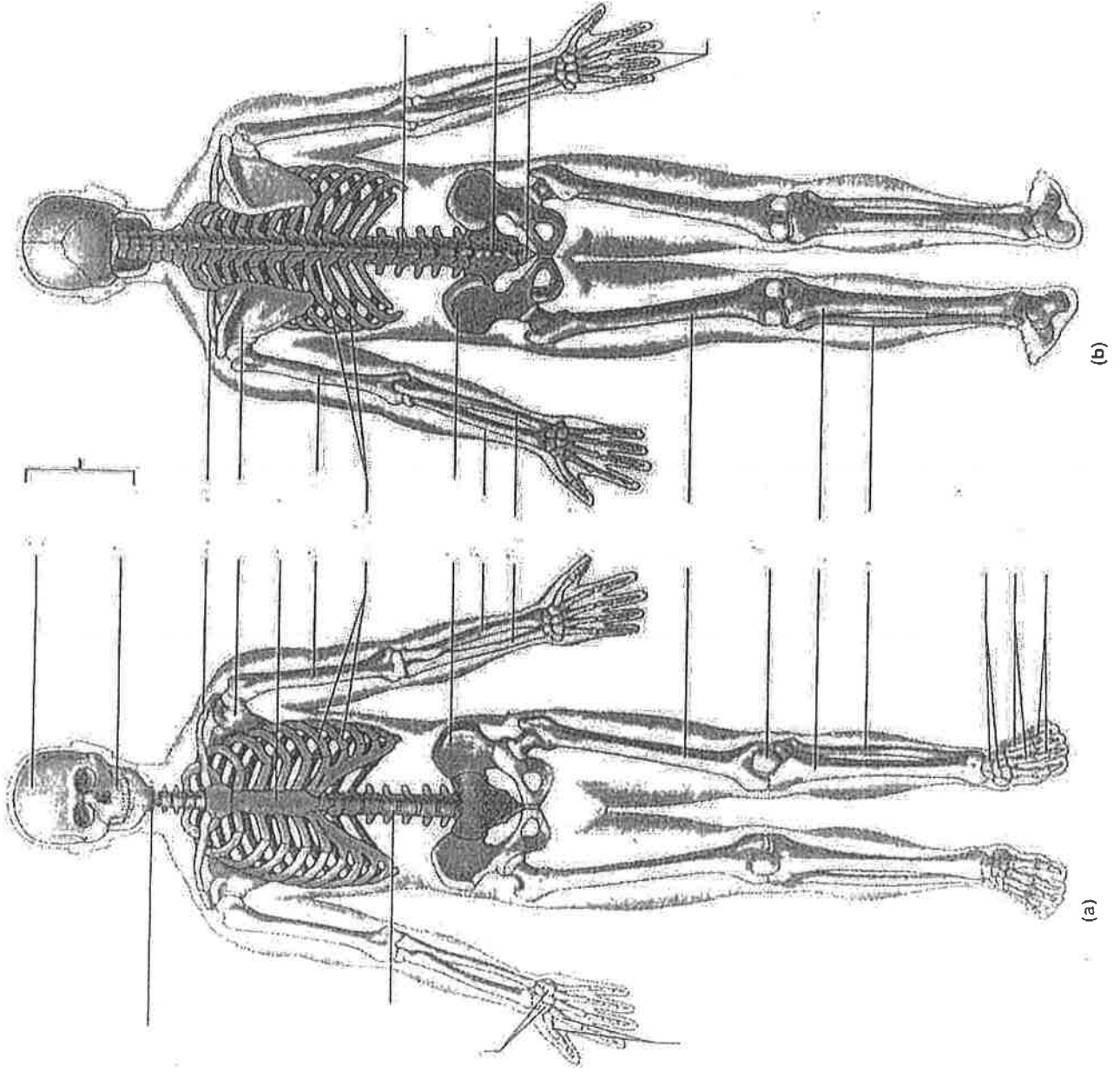
- 5) Where does red blood cell production occur?

- 6) What are immature and mature bone cells called?

- 7) What is the function of cartilage? Where is it located?

DIRECTIONS:

- Label the posterior and anterior views of the human skeleton (page 140)
- Color axial bones all one color and the appendicular bones another color.



Skeletal System Labeling (p. 132-133)

